

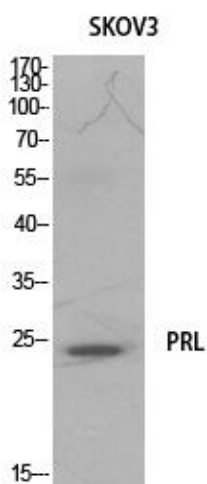


Prolactin Polyclonal Antibody

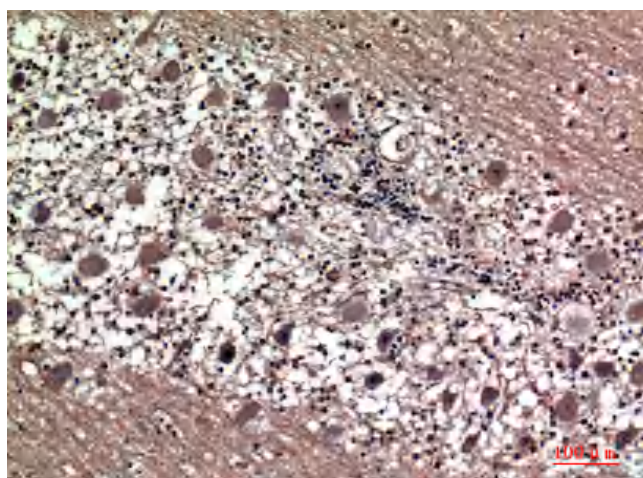
| | |
|----------------------------------|--|
| Catalog No | YP-Ab-16047 |
| Isotype | IgG |
| Reactivity | Human;Rat;Mouse; |
| Applications | WB;IHC;IF;ELISA |
| Gene Name | PRL |
| Protein Name | Prolactin |
| Immunogen | The antiserum was produced against synthesized peptide derived from the Internal region of human PRL. AA range:131-180 |
| Specificity | Prolactin Polyclonal Antibody detects endogenous levels of Prolactin protein. |
| Formulation | Liquid in PBS containing 50% glycerol, 0.5% BSA and 0.02% sodium azide. |
| Source | Polyclonal, Rabbit,IgG |
| Purification | The antibody was affinity-purified from rabbit antiserum by affinity-chromatography using epitope-specific immunogen. |
| Dilution | WB: 1/500 - 1/2000. IHC-p: 1:100-1:300. ELISA: 1/20000.. IF 1:50-200 |
| Concentration | 1 mg/ml |
| Purity | ≥90% |
| Storage Stability | -20°C/1 year |
| Synonyms | PRL; Prolactin; PRL |
| Observed Band | 25kD |
| Cell Pathway | Secreted. |
| Tissue Specificity | Mammary gland,Pituitary,Testis, |
| Function | function:Prolactin acts primarily on the mammary gland by promoting lactation.,online information:Prolactin entry,similarity:Belongs to the somatotropin/prolactin family., |
| Background | This gene encodes the anterior pituitary hormone prolactin. This secreted hormone is a growth regulator for many tissues, including cells of the immune system. It may also play a role in cell survival by suppressing apoptosis, and it is essential for lactation. Alternative splicing results in multiple transcript variants that encode the same protein. [provided by RefSeq, Aug 2011], |
| matters needing attention | Avoid repeated freezing and thawing! |
| Usage suggestions | This product can be used in immunological reaction related experiments. For more information, please consult technical personnel. |



Products Images



Western Blot analysis of SKOV3 cells using Prolactin Polyclonal Antibody. Secondary antibody(catalog#:RS0002) was diluted at 1:20000



Immunohistochemical analysis of paraffin-embedded human-brain, antibody was diluted at 1:100